

Severe Ischemic Stroke due to Progression of Cervical Carotid Artery Dissection

Nobuhiro Inoue ^{1,*}, Takayuki Kawano ², Mika Kitajima ³,
Hiroyuki Sueyoshi ² Osamu Kobayashi ¹, Yusuke Kakizoe P.T¹ Tomomi Ikeda
Yukiko Ueno ¹ Shingo Fukuda ¹, Michiya Iwata ¹ and Shuhei Fuyuta ¹

- 1.Division of Neurosurgery Kumamoto Neurosurgical Hospital
- 2.Department of Neurosurgery Kumamoto University Hospital
- 3.Department of Diagnostic Radiology Kumamoto University Hospital

Abstract

Spontaneous dissection of the cervical segment of the internal carotid artery (CS-ICA) is uncommon but not rare. A 43-year-old man suddenly developed complete right hemiparesis with motor aphasia. 3 weeks after the initial symptom onset. Magnetic resonance imaging showed enlargement of an intramural hematoma at the cervical carotid artery; it severely compressed and completely occluded the arterial lumen. Diffuse ischemia was observed in the area of the left middle cerebral artery (MCA) immediately after onset and he underwent emergency left superficial temporal artery-MCA double bypass within 6 hours. There was no fatal deterioration and his neurological deficit was resolved. We discuss our treatment of spontaneous dissection of the CS-ICA to prevent ischemic damage.

Corresponding author: Nobuhiro Inoue , Division of Neurosurgery Kumamoto Neurosurgical Hospital,

Academic Editor: ESRA DOGRU HUZMELI, MUSTAFA KEMAL UNIVERSITY SCHOOL OF PHYSICAL THERAPY AND REHABILITATION

Citation: Nobuhiro Inoue, Takayuki Kawano, Mika Kitajima, Hiroyuki Sueyoshi, Osamu Kobayashi et al. (2017) Severe Ischemic Stroke due to Progression of Cervical Carotid Artery Dissection. Journal of Neurological Research And Therapy - 2(2):17-22. <https://doi.org/10.14302/issn.2470-5020.jnrt-17-1733>

Key words : Cervical carotid artery dissection, hyperacute stage of cerebral ischemia, superficial temporal artery-middle cerebral artery bypass

Received: Aug 15,2017

Accepted: Sep 5,2017

Published: Sep 12,2017

Introduction

Earlier population-based studies on the incidence cervical internal carotid artery (ICA) dissection revealed an annual incidence rate of 2.6 - 2.9 per 100,000 individuals. Cervical ICA dissection is among the most common contributors to stroke in young and middle-aged adults (under 45 years) without vascular risk factors. They are less likely to have cerebrovascular atherosclerosis; approximately 2% of overall ischemic stroke is seen in that population.¹⁻⁵ Vertebral artery dissection (VAD) tends to be less common than cervical ICA dissection in Europe and America, however, reliable epidemiologic data are not available.⁶⁻⁸ According to a Japanese study, the most common site of dissection in the Japanese was the intracranial vertebro-basilar artery;⁹ dissection of the cervical segment of the internal carotid artery (CS-ICA) is rarely encountered. In more than 85% of the dissected vessels, ICA stenosis resolved or improved substantially^{3,10,11} and 92% of patients had a good treatment outcome.¹² As most patients tend to do well regardless of the type of treatment,^{8,10,13} identification of the optimal treatment in patients with ICA dissection is difficult.^{6,14,15} We encountered a 43-year-old Japanese male with sudden-onset severe ischemic stroke attributable to the progression of spontaneous dissection of the CS-ICA that had been diagnosed 3 weeks earlier.

Case Report

Prior written consent for the publication of our findings was obtained from the patient.

This 43-year-old Japanese male presented with right hand dysesthesia. He has not recognized his neck pain and Horner's syndrome (oculosympathetic palsy). Magnetic resonance imaging (MRI) performed on a 3T TX scanner (Philips Achieva, The Netherlands) demonstrated dissection of the left cervical carotid artery (CCA; Figs. 1A, 1B); no ischemic area was detected in the left cerebral brain. Axial section views of the CCA segment revealed a typical crescent hematoma; a bright, hyperintense circle representing the narrowed arterial lumen was visualized. A T1-volumetric isotropic turbo spin echo acquisition (VISTA) sequence resulted in the diagnosis of dissection of the CS-ICA (Fig. 1C). He had no conventional stroke risk factors such as hypertension, diabetes, hyperlipidemia, a history of cardiac valvular disease, arterial fibrillation, or features of inherited

connective tissue disorder. Also absent was a history of arterial trauma and we were unable to identify any etiological factor(s). One week later he developed Gerstman symptoms; border zone ischemia was observed in the left cerebrum (Fig. 2 -Ic). He was admitted and the administration of antiplatelet agents was started. The left middle cerebral artery (MCA) was supplied via antegrade circulation (Fig. 2-Ib) and an increase in the flow-void intensity was noted (compare Figs. 1C with Fig. 2-Ia). MRI studies acquired one week later revealed spreading of the ischemic area to beyond the watershed zone between the left anterior cerebral artery (ACA) and the MCA, and the MCA and the posterior cerebral artery (PCA) (Fig. 2-IIc). The area of dissection had spread from the ICA bifurcation to the top of the ICA. The blood supply to the left MCA territory derived from the circle of Willis (Fig. 2-IIb). The flow-void intensity had increased further (compare Figs. 2-Ia with Fig. 2-IIa). Two weeks after his admission he suddenly experienced complete right-sided hemiparesis with motor aphasia. MRI performed within 45 min demonstrated diffuse ischemia in the left MCA territory (Fig. 2-IIc), the left A1 segment could not be visualized. The left MCA and its A1 segment were completely occluded (Fig. 2-IIIb). The flow-void intensity indicated complete occlusion of the true lumen (Fig. 2-IIIa). He underwent emergency left superficial temporal artery (STA)-MCA bypass surgery within 6 hours; double anastomosis was successful. External decompression was performed to prevent neurological deterioration due to severe brain swelling. An intensive rehabilitation has been continued for him after operation. His functional independence measure (FIM) score recorded over the course of 4 months showed remarkable improvement (Fig. 3) as did the standard language test for aphasia.

Discussion

This is a first report which was able to detect the progression of the dissection of cervical carotid artery chronologically within few weeks beyond to the severe ischemic stroke. In regard with the treatment of the cervical carotid artery dissection has been addressed by the administration of anticoagulants or antiplatelet agents, and by surgical procedures such as removal of the intramural hematoma, arterial resection with vein graft replacement, endovascular treatment consisting of

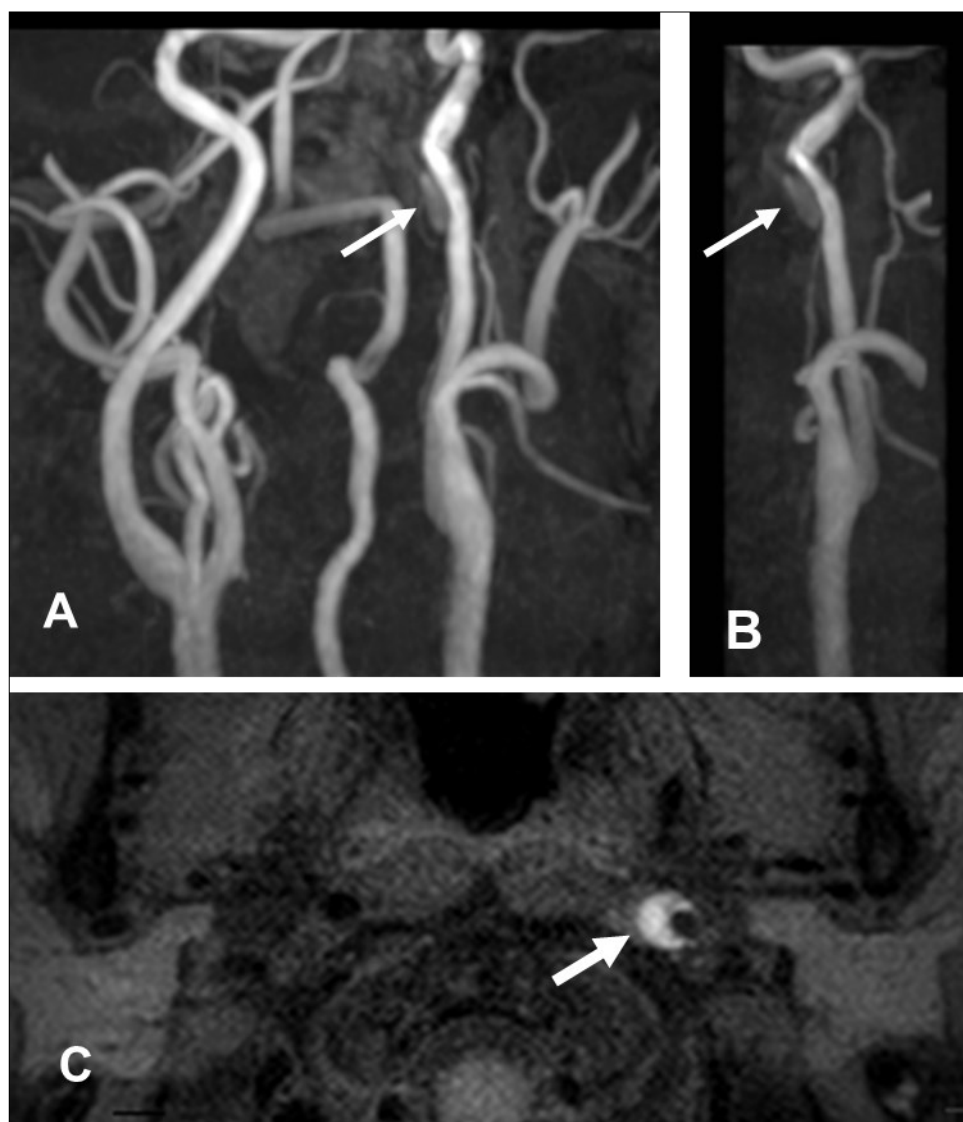


Figure 1 – First hospitalization

- A. Maximum intensity projection (MIP)image of arteries in the cervical segment
- B. Magnetic resonance angiography of the left carotid artery
- C. T1 VISTA sequence. Note the flow void reflective of the narrowed lumen next to intramural hematoma (hyperintense crescent)

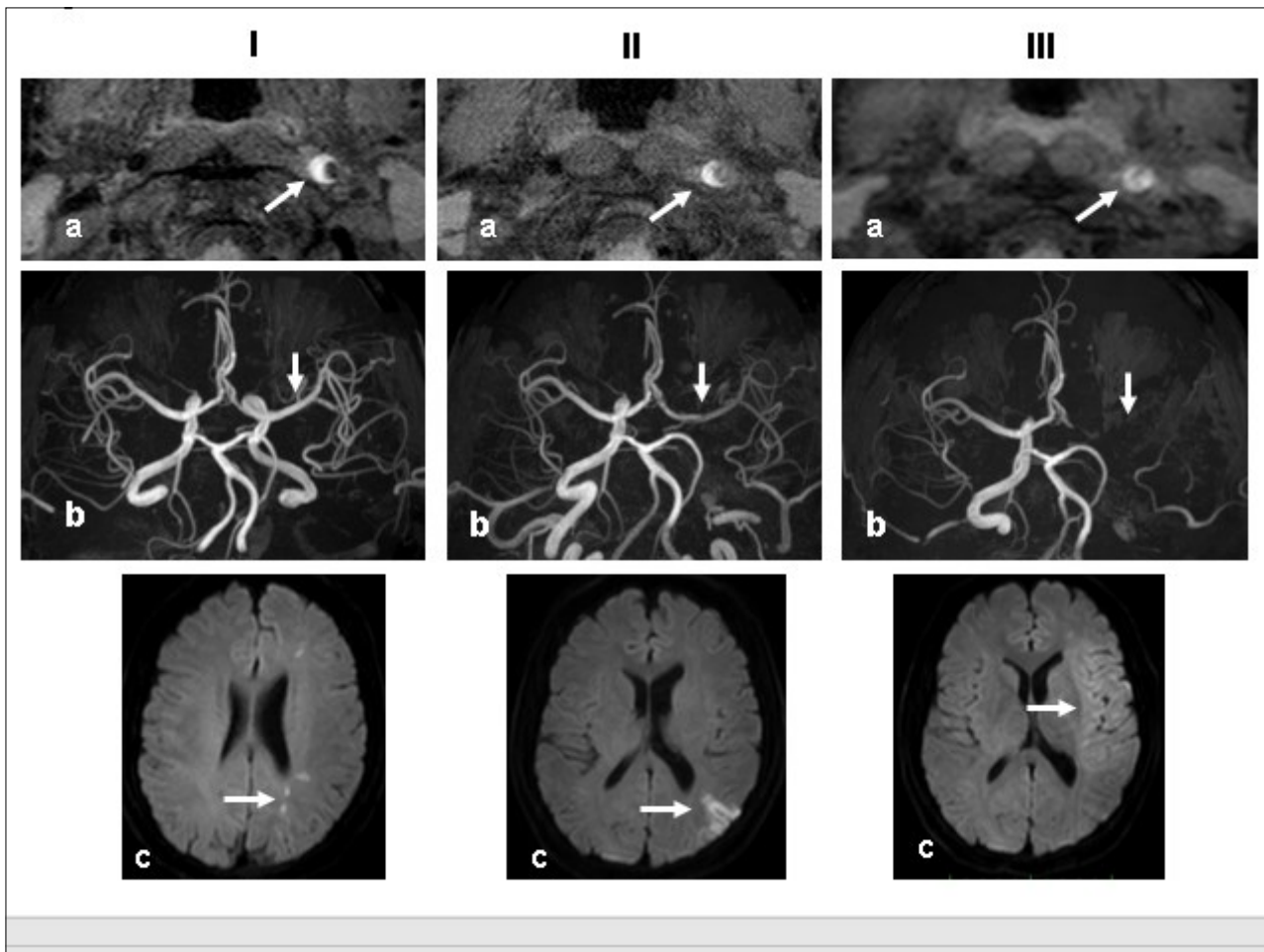


Figure 2 – Time course

Columns I, II, and III are images obtained 1, 2, and 3 weeks, respectively, after the start of dissection of the cervical segment of the internal carotid artery

- Ia, IIa, IIIa. T1 VISTA images of the same segment shown in Fig. 1C. The dark area reflective of the low void progresses to hyperintensity by week 3. IIIa shows complete occlusion of the true lumen by the intramural hematoma (arrow).
- Ib, IIb, IIIb. TOF-MRA images of the intracranial arteries. (a) The left MCA is supplied via antegrade flow from the left carotid artery (arrow). (b) Flow from the left carotid artery disappeared from the ICA bifurcation to the top of the ICA. Blood supply to the left MCA derives from the circle of Willis via the anterior- or the posterior communicating artery (arrows). By week 3, flow to the left MCA, even via the left A1 segment of the anterior cerebral artery had disappeared completely.
- Ic, IIc, IIIc. Diffusion-weighted images at the basal ganglia level. Week 1: a few hyperintense areas are visualized in the border zone of the left cerebrum (arrow). Week 2: Note the hyperintensity area in the watershed zone between the left ACA and the MCA, and between the MCA and the PCA (arrow). The image acquired on week 3 shows a diffuse hyperintensity area in the left MCA territory (arrow).

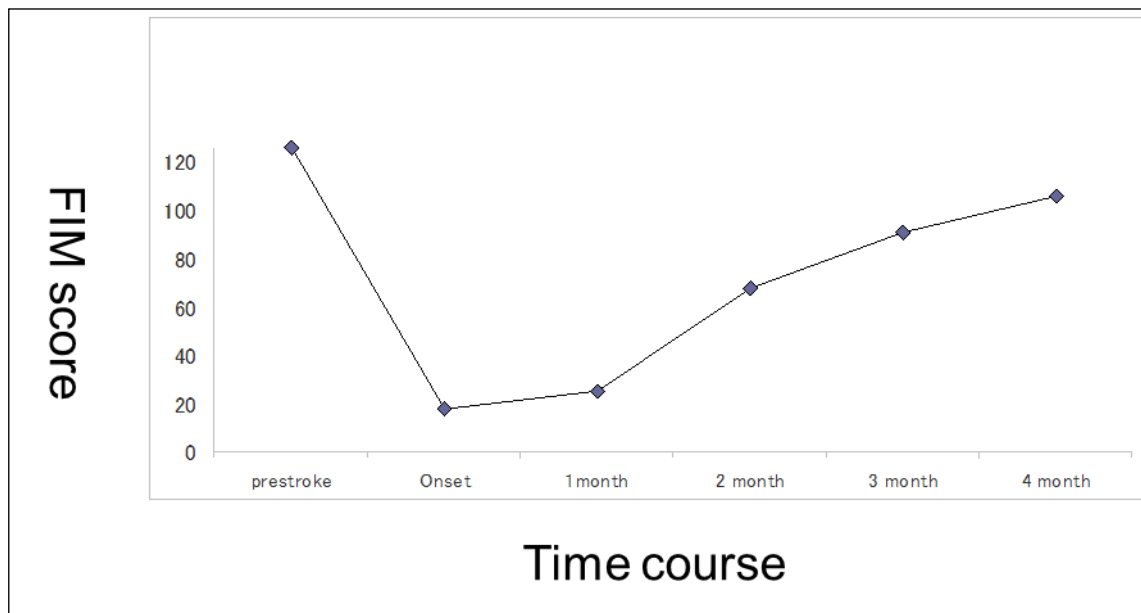


Figure 3

FIM score recorded over the course of 4 months.

percutaneous balloon angioplasty and stent placement, by occlusion of the distal extracranial carotid artery, and by superficial temporal artery-MCA bypass.^{1,6,10,16,17} The usefulness of antithrombotic therapy has not been validated^{7,13,14,18} and no evidence-based consensus guidelines for surgical intervention are available.^{14,15,17} In fact, the dissection of CS-ICA progressed despite of the antiplatelet agent administration in our case. Stent placement procedures may result in embolization from displaced intraluminal or intramural thrombi^{16,17} and surgical outcomes still need to be carefully evaluated.¹² Although fewer than 5% of patients with dissection of the CS-ICA died due to massive cerebral infarct or edema,^{3,6,7,14} 4 - 5% were at risk for stroke recurrence in the first 2 weeks after CS-ICA dissection.^{13,19} According to Morris et al.,²⁰ in the absence of ischemia at the time of diagnosis, the risk of stroke after cervical artery dissection is limited to the first 2 weeks post-dissection, suggesting that stroke-prevention therapy should be started as early as possible after the onset of the first symptoms.²¹

In our patient, the left MCA was fed by scant blood flow through the circle of Willis until 2 weeks after the start of arterial dissection. Further one week later,

the carotid artery was completely occluded and this led to severe ischemic stroke in the territory of the left MCA unexpectedly. The mechanism(s) underlying cerebral ischemic symptoms is thought to be hemodynamic at first as a result of significant stenosis or occlusion of the carotid artery involved by dissection extending to the A1 segment.^{6,22} In our case, immediate STA-MCA anastomosis was completed within the therapeutic time window²³⁻²⁵ and narrowly escaped fatal deficits developed. There has not been established authentic strategies for the spontaneous dissection of the CS ICA to prevent complete stroke yet. In conclusion, patients with spontaneous dissection of the CS ICA is needed to treat optimally within few weeks after initiation of the dissection.

References

1. Ehrenfeld WK, Wylie EJ. Spontaneous dissection of the internal carotid artery. Arch Surg 1976 ; 111: 1294-130
2. Schievink WI, Mokri B, Whisnant JP. Internal Carotid artery dissection in a community Rochester, Minnesota, 1987-1992 Stroke 1993;24:1678-1680
3. Schievink WI, Mokri B, O' Fallon WM. Recurrent

- spontaneous cervical artery dissection. *N Engl J Med* 1994;330:397-397
4. Giroud M, Fayolle H, Andre N, Dumas R, Becker F, Martin D, Vaudoin N, Krause D. Incidence of internal carotid artery dissection in the community of Dijon. *J Neurol Neurosurg Psychiatry* 1994; 57:1443
 5. Zhang F-L, Guo ZN, Liu Y, Luo Y, Yang Y. Dissection extending from extra-to intracranial arteries. A case report of progressive ischemic stroke. *Medicine* 2017;96.21:1-4
 6. Mokri B. Spontaneous dissections of internal carotid arteries. *The Neurologist* 1997 3: 104-119
 7. Schievink WI. Spontaneous dissection of the carotid and vertebral arteries. *N Engl J Med* 2001; 344:898-906
 8. Lee VH, Brown RD, Mandrekar JN, Mokri B. Incidence and outcome of cervical artery dissection. A population-based study. *Neurology* 2006; 67: 1809-1812
 9. Makoto Takagi. Cerebral arterial dissections. *Clin Neurol* 2005; 45: 846-848 (in Japanese with English Abstract)
 10. Mokri B, Sundt TM, Houser W, Piegras DG. Spontaneous dissection of the cervical internal carotid artery. *Ann Neurol* 1986; 19:126-13
 11. Bassetti C, Carruzzo A, Sturzenegger M, Tuncdogan E. Recurrence of cervical artery dissection. A prospective study of 81 patients. *Stroke* 1996; 27:1804-1807
 12. Hart RG, Easton JD. Dissections of cervical and cerebral arteries. *Neurol Clin* 1983;1:155-182
 13. Arauz A, Hoyos L, Espinoza C, Cantu C, Barinagarrementeria, Roman G. Dissection of cervical arteries: long -term follow-up study of 130 consecutive cases. *Cerebrovasc Dis* 2006; 22:150-154
 14. Saver JL, Easton JD, Hart RG. Dissections and trauma of cervicocerebral arteries In: Barnett HJM et al editors *Stroke, pathophysiology, diagnosis, and management*. 2nd ed. London: Churchill Livingstone, 1992:671-688
 15. Mokri B. Dissections of cervical and cephalic arteries. Sundt's occlusive cerebrovascular disease. 2nd ed. Philadelphia: WB Sander 1994 45-70.
 16. Marks MP, Dake MD, Steinberg GK, Norbash AM, Lane B. Stent placement for arterial and venous cerebrovascular disease: Preliminary experience. *Radiology* 1994; 191:441-446
 17. Beletsky V, Nadareishvili Z, Lynch J, Shuaib A, Woolfenden A, Norris JW for the Canadian Stroke Consortium. Cervical arterial dissection. Time for a therapeutic trial? *Stroke* 2003; 34:2856-2860
 18. CADISS nonrandomized arm and meta-analysis. Antiplatelets vs anticoagulation for dissection. *Neurology* 2012; 79: 686-689.
 19. Weimar C, Kraywinkel K, Hagemeister C, Haaß A, Katsarava Z, Brunner F, Haverkamp, Schmid E, Diener H-C, on behalf of the German Stroke Study Collaboration. Recurrent stroke after cervical artery dissection. *J Neurol Neurosurg Psychiatry* 2010; 81:869-873
 20. Morris NA, Merkler AE, Gialdini G, Kamel H. Timing of incident stroke risk after cervical artery dissection presenting without ischemia. *Stroke* 2017, 48:551-555
 21. Biousse V, D'Anglejan- Chatillon J, Touboul P-J, Amarenco P, Bousser M-G. Time course of symptoms in extracranial carotid artery dissections. A series of 80 patients. *Stroke* 1995; 26:235-239
 22. Lucas C, Moulin T, Deplanque D, Tatu L, Chavot D; and the DONALD Investigators. Stroke patterns of internal carotid artery dissection in 40 patients. *Stroke* 1998; 29:2646-2648
 23. Jones TH, Morawetz RB, Crowell RM, Marcoux FW, FitzGibbon SJ, DeGirolami U, Ojeman RG : Thresholds of focal cerebral ischemia in awake monkeys. *J Neurosurg* 54:773-782. 1981
 24. Hanson SK, Grotta JC, Rhoades H, Tran HD, Lamki LM, Barron BJ, Taylor WJ: Value of single-photon emission-computed tomography in acute stroke therapeutic trials. *Stroke* 24: 1322-1329. 1993
 25. Shimosegawa E, Hatazawa J, Inugami A, Fujita H, Ogawa T, Aizawa Y, Kanno I, Okudera T, Umemura K: Cerebral infarction within six hours of onset: Prediction of complete infarction with Technetium-99m-HMPAO SPECT. *J Nucl Med* 35: 1097-1103, 1994